

# The Sundridge-Strong Fire Department & FireSmart Canada



**FireSmart**<sup>TM</sup>  
Canada

# Sundridge-Strong Fire Department.



Forest fire prevention, and mitigation of forest fire risk to your home or cottage.

# FireSmart Canada



FireSmart Canada Was founded in 1993 and has been used extensively and seen significant success throughout western Canada. With entire communities and neighbourhoods making the “FireSmart” commitment.



# FireSmart Canada



The Primary objective of FireSmart Canada is to engage Homeowners in assessments of their own properties and provide strategies to minimize or eliminate possible ignitions sources.

## Completing a Property assessment

### Homeowner resources

- Self-assessment checklist
- Download the Self-assessment app
- Manuals & Guides

# IOS and Android application download



- Scan the QR codes below to download the FireSmart Begins at home application for your smartphone.



**SCAN ME**

iOS users



**SCAN ME**

Android users



# FireSmart Canada



## Understanding Fire Behaviors

Fuels include trees, woodpiles, Structures, fences, dry grass and plants etc.

Fires are spread by

- Embers & Sparks (up to 2km)
- Extreme Heat
- Direct Flame

### FIRE + FUEL = WHY HOMES BURN



Unmitigated Property



FireSmart-Mitigated Property

# FireSmart Canada

Home ignition zone or HIZ, is the area within 30 metres of your home or other structures. It's made up of three areas

- Immediate zone
- Intermediate zone
- Extended zone.





# FireSmart Canada

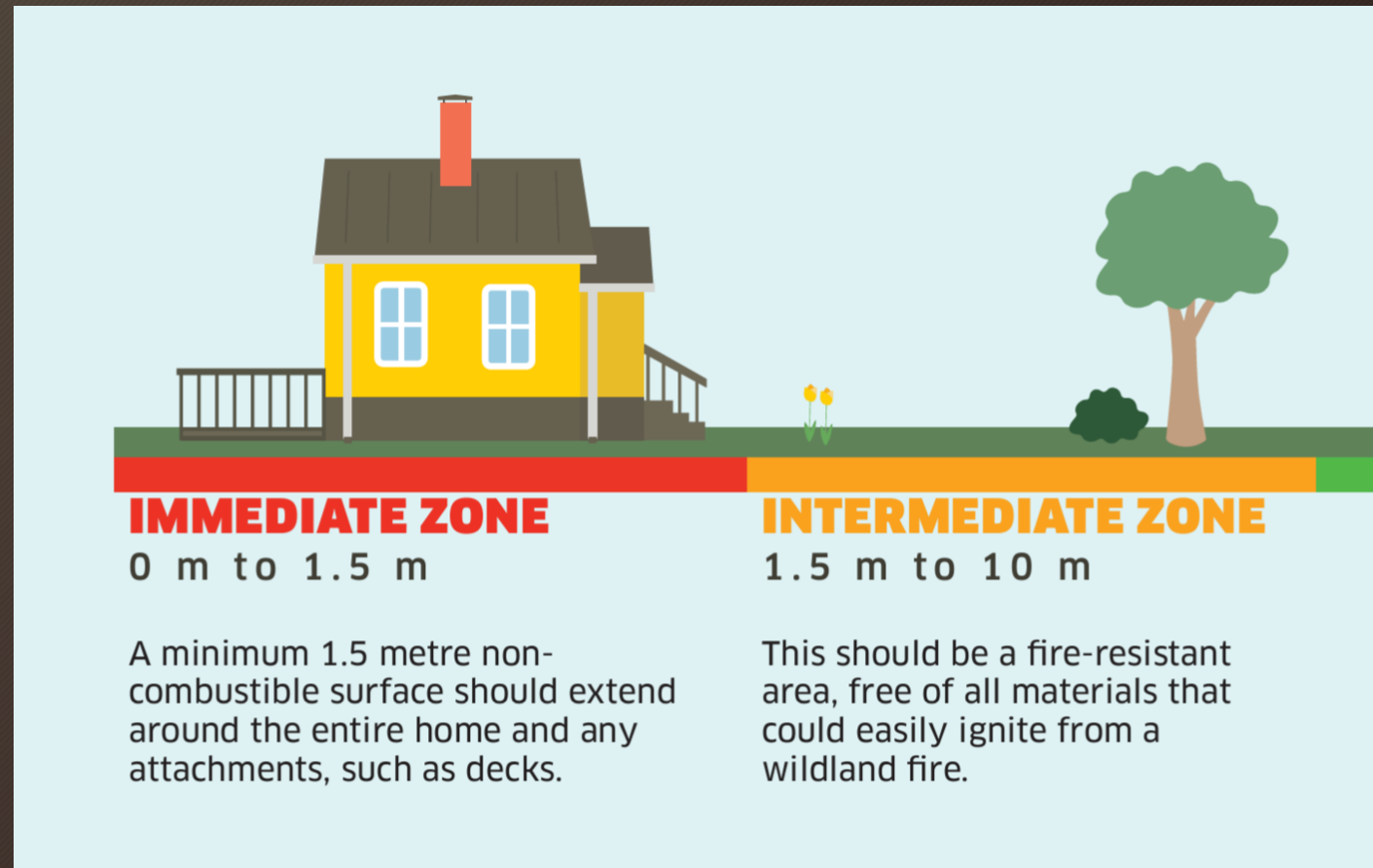


## Immediate Zone:

- Landscape with only non-combustible materials
- Clear vegetation and debris
- Avoid any woody shrubs or trees, if any are present trim and maintain them

## Intermediate Zone:

- Plant fire resistant vegetation
- Avoid incorporating wood products such as mulch
- Keep any combustible materials such as wood piles, lawn furniture, and decorative pieces out of this zone

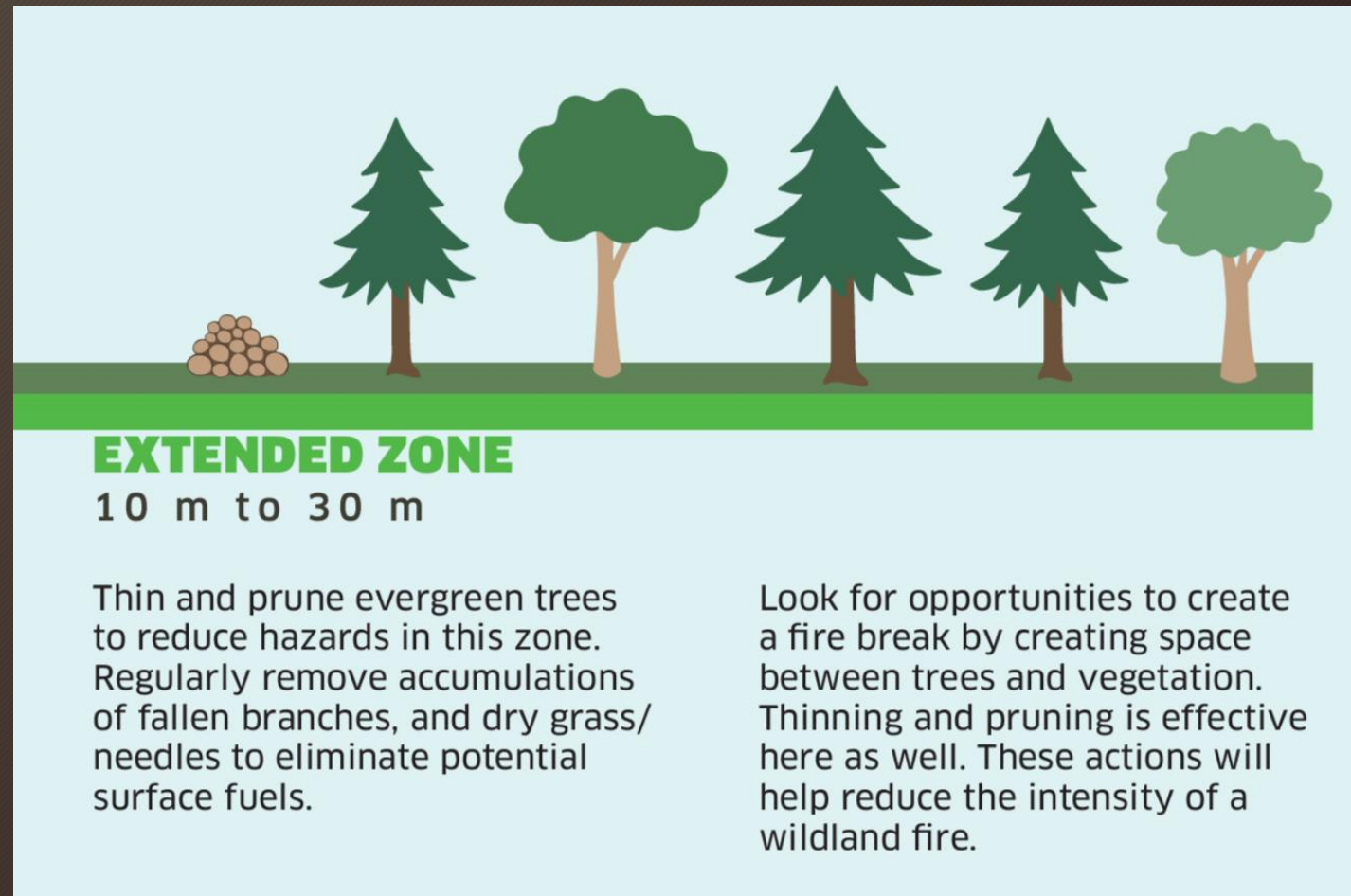


# FireSmart Canada



## Extended Zone:

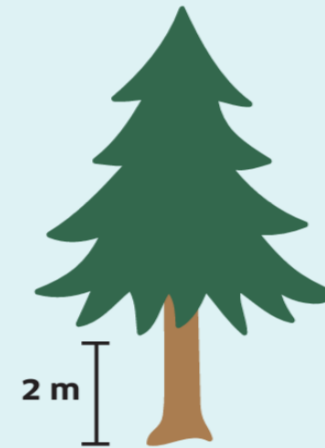
- Selectively remove coniferous trees to thin large closely grouped areas
- Regularly clean up accumulations of fallen branches, dry grass, and needles
- Continue to apply these principals if your property extends beyond 30 metres



Steps to slow potential fire spread throughout your property.

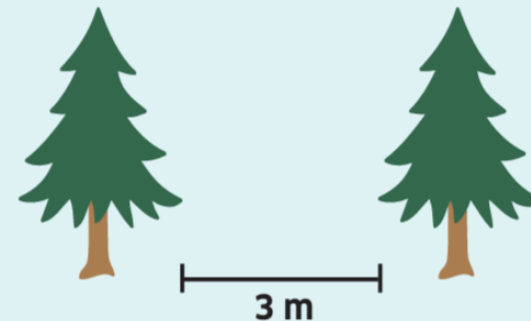
## Prune Trees

Prune all tree branches within 2 metres from the ground.



## Tree Spacing

Spacing trees at least 3 metres apart will help reduce the intensity of a wildland fire.





# FireSmart Canada



FireSmart Canada offers online training for those looking to learn more about how to make a FireSmart community

[FireSmart 101 Training Module](#)

## Summary

- Large amount of assessment tools for property owners.
- Training and program support roles.
- Resources providing mitigation strategies for individuals or neighborhoods, with proven success throughout Canada.
- The mitigation of forest fire risk starts with each one of us.

# Sundridge-Strong Fire Department & FireSmart Canada

Sundridge-Strong Fire Department contact information:

Phone (705) 384-7378

- Fire Chief Andrew Torrance  
Email: [firechief@sundridge.ca](mailto:firechief@sundridge.ca)
- Fire Prevention Officer Brendan Adams  
Email: [badams@sundridge.ca](mailto:badams@sundridge.ca)

